

LLL Registration Form \* Deadline June 7<sup>th</sup>, 2010

Name(s): \_\_\_\_\_  
 Phone Number: \_\_\_\_\_  
 Mailing Address: \_\_\_\_\_  
 Email Address: \_\_\_\_\_  
 Can we contact you in the future about LLL? Yes No  
 Food Allergies: \_\_\_\_\_  
 Emergency contact & #: \_\_\_\_\_

Have you attended Ladies Livestock Lessons before?:  
 No Yes Year \_\_\_\_\_  
 What type of livestock do you have? \_\_\_\_\_

**Choose 4/6 Breakout Sessions to attend:**

- Xeriscape Gardening
- Weed Identification
- Equine Hoof Care
- Electric Fencing
- Livestock Watering Systems
- Stock Dogs

**T-Shirt Size:**


Small

Medium

Large

Extra Large

Accommodations on June 15th, and all meals are included in the registration fee: \$105(price includes GST). For additional



For more information on Working Well Workshops touring Alberta contact Krsta Tremblert, at 780-644-8341 or [Krsta.Tremblert@gov.ab.ca](mailto:Krsta.Tremblert@gov.ab.ca). Clean water. Well protected.



Growing Forward



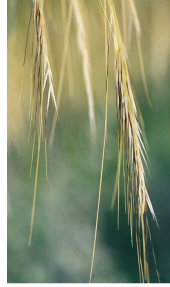
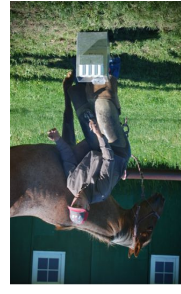
**LIVESTOCK CARE ALERT**  
 Call if you have livestock care concerns  
 1-800-506-2273  
[atac.ab.ca](http://atac.ab.ca)  
 Supported by Alberta's Livestock Industry  
 AFAC ALBERTA FARM ANIMAL CARE



# Ladies Livestock Lessons

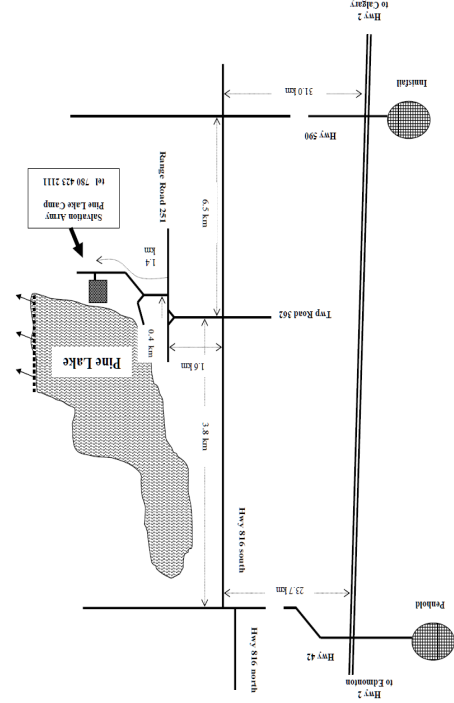
## June 15th & 16th

### Salvation Army Pine Lake, AB



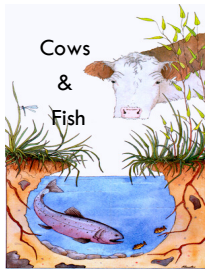
*Managing Your Grass, Water & Steer*

## Directions to Salvation Army Camp



**Directions:**

1. turn east on Hwy 42
2. turn south on Hwy 816,
- From Hwy 2 heading south:
1. turn east on Hwy 590 (the initial overpass)
2. turn north Hwy 816,
- From Either Direction:
3. turn east on Twp Rd 362,
4. when you reach the T-intersection at Rg. Rd. 251 turn south
5. Continue east on Twp Rd. 362
6. Salvation Army Camp is on the North side of the road



## Day 2 - June 16th

8:00 am - 3:30 pm

8:00am Continental  
Breakfast

### Classroom:

- Beef Herd Health
- Sustainable Stocking Rates

### Field Session:

Riparian Health  
Range Health

Presentations will be a combination of indoor and outdoor activities, be sure to bring appropriate clothing  
**RAIN or SHINE!**



## Day 1- June 15th

9:00 am—8:00 pm

9:00-10:00 Registration &  
Continental Breakfast

### Classroom:

- Livestock Genetics
- Manure Management
- Livestock Handling

### Field Sessions:

- Xeriscape Gardening
- Weed Identification
- Equine Hoof Care
- Electric Fencing
- Livestock Watering Systems
- Stock Dogs

6:00 pm Supper

7:00 pm Speaker from  
Operation Grassland

8:00 pm Film Fest of  
Stewardship Stories from  
Cows & Fish

# Red Deer County



### LLL Registration

**\$105.00 (price includes G.S.T.)**

#### Included:

- Two Day Registration
- Meals & Coffee Breaks
- Educational Materials
- Accommodation on June 15th

- **Dormitory accommodation**  
(bring your own bedding and towels)

or

- **RV/ Camping available**

\* First Come First Serve

**Fun & Knowledgeable**

**Learning Environment!!!!**

Please Complete and return the  
registration form on the back.

Registration Deadline June 7th,  
2010

Register early as space is  
limited!!



For more information contact  
Katie Roxburgh at Red Deer  
County

PH: (403) 350-2165

Fax: (403) 346-9840

38106 Rge Rd 275

Red Deer County, AB T4S 2L9

KRoxburgh@reddeercounty.ab.ca

Or visit your local County website.